



Common Land Unit  PLSS

- Non-Cropland
- Tract Boundary

**Wetland Determination Identifiers**

- Restricted Use
- ▼ Limited Restrictions
- Exempt from Conservation Compliance Provisions

2017 Program Year

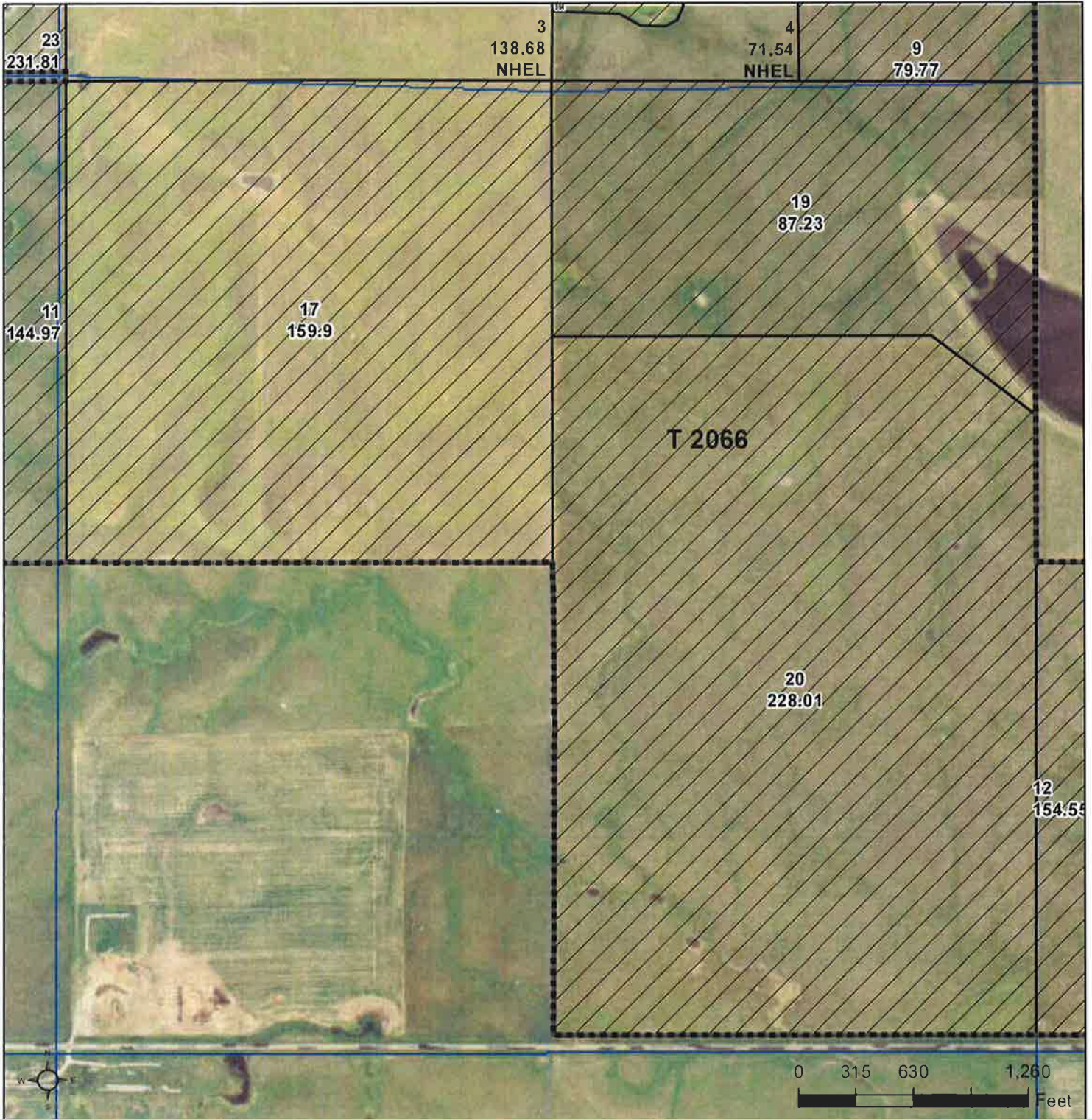
Map Created March 24, 2017

**Farm 5633**

**10 -121N -69W**

United States Department of Agriculture (USDA) Farm Service Agency (FSA) maps are for FSA Program administration only. This map does not represent a legal survey or reflect actual ownership; rather it depicts the information provided directly from the producer and/or National Agricultural Imagery Program (NAIP) imagery. The producer accepts the data 'as is' and assumes all risks associated with its use. USDA-FSA assumes no responsibility for actual or consequential damage incurred as a result of any user's reliance on this data outside FSA Programs. Wetland identifiers do not represent the size, shape, or specific determination of the area. Refer to your original determination (CPA-026 and attached maps) for exact boundaries and determinations or contact USDA Natural Resources Conservation Service (NRCS).





**Common Land Unit**

- Tract Boundary
- Non-Cropland
- PLSS
- Cropland

**Wetland Determination Identifiers**

- Restricted Use
- Limited Restrictions
- Exempt from Conservation Compliance Provisions

2017 Program Year

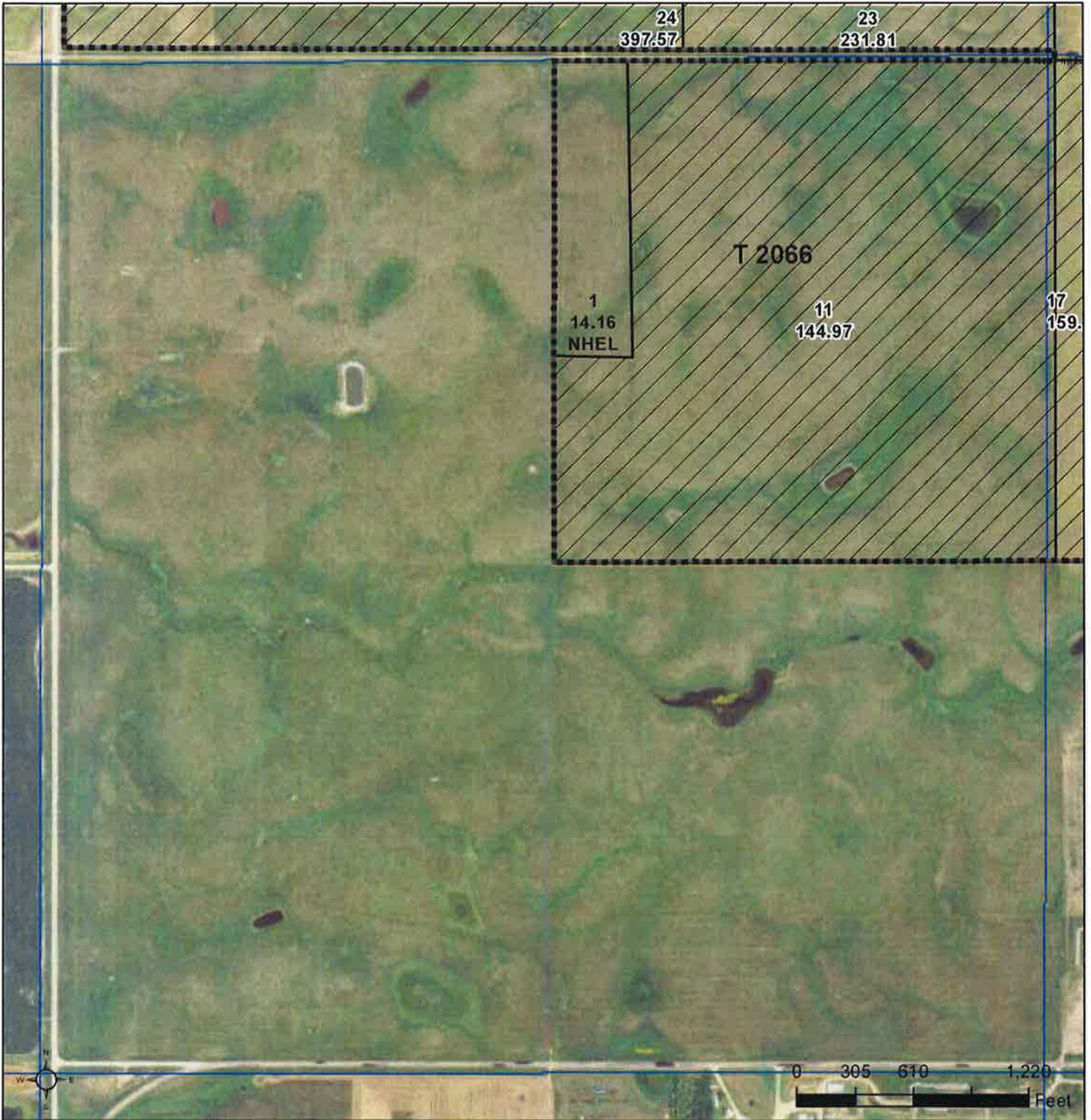
Map Created March 24, 2017

**Farm 5633**

**9 -121N -69W**

United States Department of Agriculture (USDA) Farm Service Agency (FSA) maps are for FSA Program administration only. This map does not represent a legal survey or reflect actual ownership, rather it depicts the information provided directly from the producer and/or National Agricultural Imagery Program (NAIP) imagery. The producer accepts the data 'as is' and assumes all risks associated with its use. USDA-FSA assumes no responsibility for actual or consequential damage incurred as a result of any user's reliance on this data outside FSA Programs. Wetland identifiers do not represent the size, shape, or specific determination of the area. Refer to your original determination (CPA-026 and attached maps) for exact boundaries and determinations or contact USDA Natural Resources Conservation Service (NRCS).





**Common Land Unit**

- Tract Boundary
- Non-Cropland
- PLSS
- Cropland

**Wetland Determination Identifiers**

- Restricted Use
- Limited Restrictions
- Exempt from Conservation Compliance Provisions

2017 Program Year  
Map Created March 24, 2017

**Farm 5633**



**8 -121N -69W**

United States Department of Agriculture (USDA) Farm Service Agency (FSA) maps are for FSA Program administration only. This map does not represent a legal survey or reflect actual ownership; rather it depicts the information provided directly from the producer and/or National Agricultural Imagery Program (NAIP) imagery. The producer accepts the data 'as is' and assumes all risks associated with its use. USDA-FSA assumes no responsibility for actual or consequential damage incurred as a result of any user's reliance on this data outside FSA Programs. Wetland identifiers do not represent the size, shape, or specific determination of the area. Refer to your original determination (CPA-026 and attached maps) for exact boundaries and determinations or contact USDA Natural Resources Conservation Service (NRCS).








Common Land Unit  PLSS

-  Non-Cropland
-  Tract Boundary

**Wetland Determination Identifiers**

-  Restricted Use
-  Limited Restrictions
-  Exempt from Conservation Compliance Provisions

United States Department of Agriculture (USDA) Farm Service Agency (FSA) maps are for FSA Program administration only. This map does not represent a legal survey or reflect actual ownership; rather it depicts the information provided directly from the producer and/or National Agricultural Imagery Program (NAIP) imagery. The producer accepts the data 'as is' and assumes all risks associated with its use. USDA-FSA assumes no responsibility for actual or consequential damage incurred as a result of any user's reliance on this data outside FSA Programs. Wetland identifiers do not represent the size, shape, or specific determination of the area. Refer to your original determination (CPA-026 and attached maps) for exact boundaries and determinations or contact USDA Natural Resources Conservation Service (NRCS).

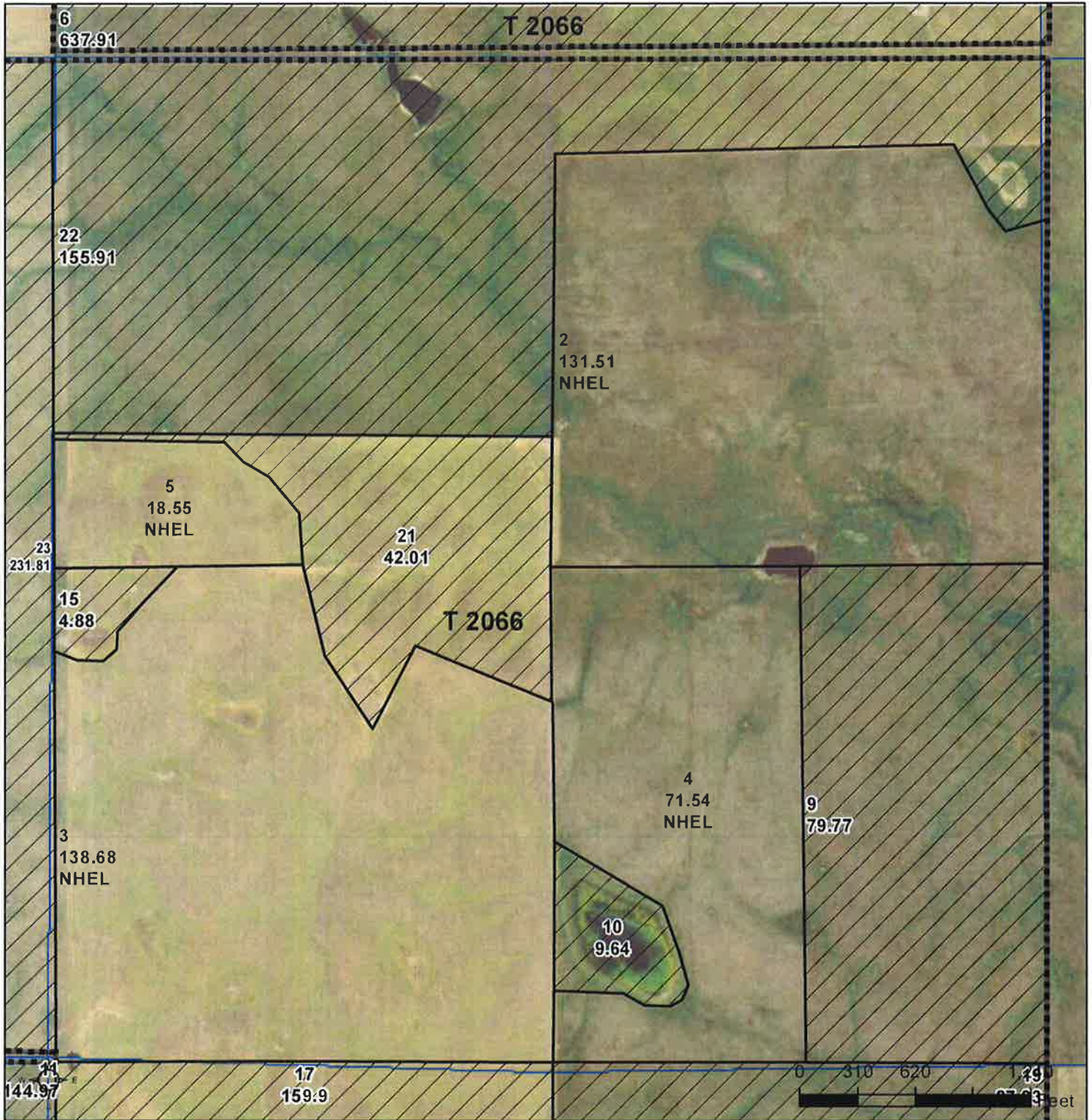
2017 Program Year

Map Created March 24, 2017

**Farm 5633**




**5 -121N -69W**





**Common Land Unit**  
 Non-Cropland  
 Cropland  
 Tract Boundary  
 PLSS

**Wetland Determination Identifiers**

-  Restricted Use
-  Limited Restrictions
-  Exempt from Conservation Compliance Provisions

2017 Program Year

Map Created March 24, 2017

**Farm 5633**

**4 -121N -69W**





Common Land Unit    PLSS

- Non-Cropland
- Tract Boundary

**Wetland Determination Identifiers**

- Restricted Use
- ▼ Limited Restrictions
- Exempt from Conservation Compliance Provisions

**2017 Program Year**

Map Created March 24, 2017

**Farm 5633**

**33 -122N -69W**

United States Department of Agriculture (USDA) Farm Service Agency (FSA) maps are for FSA Program administration only. This map does not represent a legal survey or reflect actual ownership; rather it depicts the information provided directly from the producer and/or National Agricultural Imagery Program (NAIP) imagery. The producer accepts the data 'as is' and assumes all risks associated with its use. USDA-FSA assumes no responsibility for actual or consequential damage incurred as a result of any user's reliance on this data outside FSA Programs. Wetland identifiers do not represent the size, shape, or specific determination of the area. Refer to your original determination (CPA-026 and attached maps) for exact boundaries and determinations or contact USDA Natural Resources Conservation Service (NRCS).